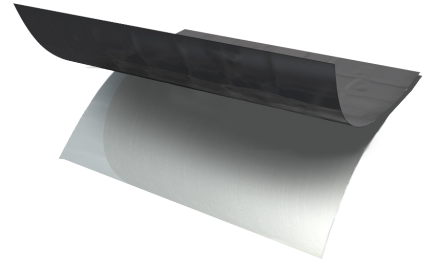


Griffolyn® Pressure Sensitive Tape is available in three colors: Clear, white or black. The tape consists of our Griffolyn® Type-55 material, pressure sensitive tape and release paper.



## ■ Installation

The surface to be taped should be clean and dry. The tape will not adhere if the surfaces are not properly prepared. Dirty or wet surfaces should be completely cleaned with water, paper towels, dry rags or other materials which will prepare the surface for the tape. Accumulations of dust should also be removed to insure a secure seam.

The product obtains optimum adhesion when the surfaces to be bonded are warm. The surfaces should be above 50° - 60°F to insure an acceptable bond. In order to obtain a bond at lower temperatures, external heat may be required. The use of an industrial style hot air blower is one recommended method. Extra care should be taken when attempting to install tape at temperatures below 32°F.

## ■ Physical Properties & Typical Values

| PROPERTY                                 | U.S. VALUE         | METRIC VALUE   |
|--|--------------------|----------------|
| Standard Weight 4" x 50' Roll            | 3.0 LBS            | 1.4 KG         |
| Peel Strength*                           | 55 LBF             | 244.6 N        |
| Room Temperature ~ 20 Hrs (180° Peel)    | 10.0 - 14.0 LBS/in | 44.5 - 62.2 N  |
| Room Temperature ~ Quick Set (180° Peel) | 8.5 - 12.5 LBS/in  | 37.8 - 55.6 N  |
| Softening Temperature (Ring & Ball)      | 245° - 270° F      | -136° - 150° C |
| PPT Resistance                           | 36 LBF             | 160 N          |

\* Values obtained when using Polypropylene plates.

MADE  
IN THE  
USA

Pressure Sensitive Tape

GRIFFOLYN®