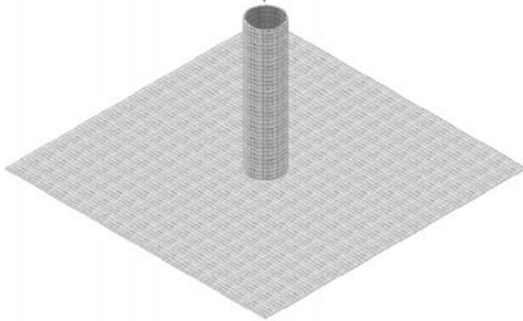


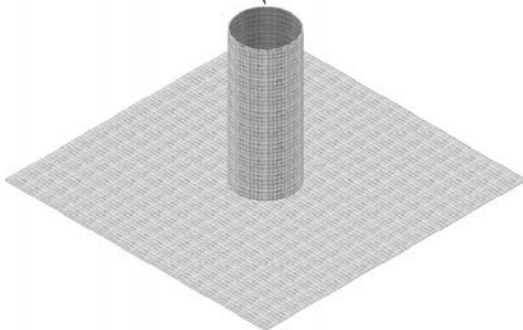
STOCK PIPEBOOTS GRIFFOLYN

3" DIA O.D. PIPE
MAXIMUM



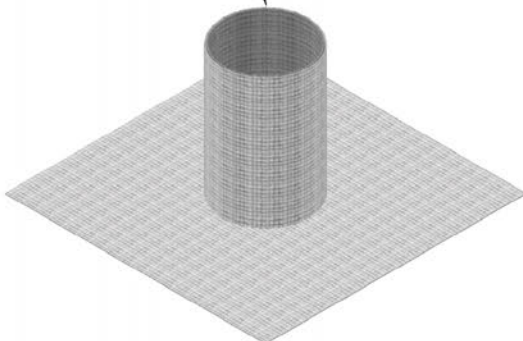
REEF INDUSTRIES PART NO: 60-0075
PIPEBOOTS ARE MADE FROM GRIFFOLYN
MATERIAL. THE 5" LAYFLAT (3" DIA)
PIPEBOOT IS DESIGNED TO FIT PIPES
RANGING FROM $\frac{1}{2}$ " TO $2\frac{1}{2}$ " IN DIAMETER
INCLUDES 24" X 24" APRON

5" DIA O.D. PIPE
MAXIMUM



REEF INDUSTRIES PART NO: 60-0076
PIPEBOOTS ARE MADE FROM GRIFFOLYN
MATERIAL. THE 8" LAYFLAT (5" DIA)
PIPEBOOT IS DESIGNED TO FIT PIPES
RANGING FROM $2\frac{1}{2}$ " TO $4\frac{1}{2}$ " IN DIAMETER
INCLUDES 24" X 24" APRON

8" DIA O.D. PIPE
MAXIMUM



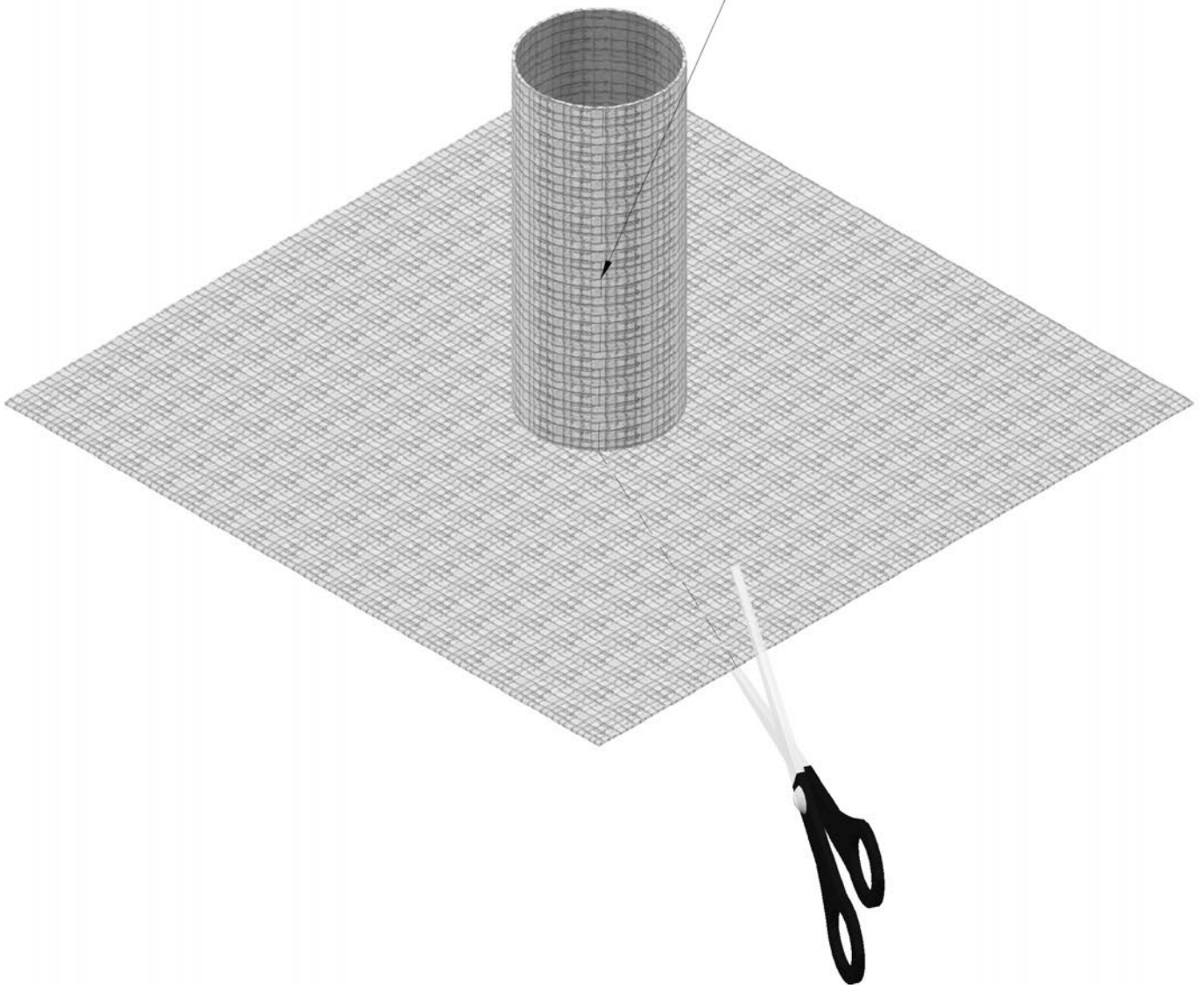
REEF INDUSTRIES PART NO: 60-0116
PIPEBOOTS ARE MADE FROM GRIFFOLYN
MATERIAL. THE 14" LAYFLAT (8" DIA)
PIPEBOOT IS DESIGNED TO FIT PIPES
RANGING FROM $4\frac{1}{2}$ " TO 8" IN DIAMETER
INCLUDES 24" X 24" APRON

NOTE: This document provides information related to the installation of "pipeboots" and its components. This document does not attempt to address all aspects of an installation for all application. The information presented is general information in order to familiarize the individual with the overall scope of the project.

CUSTOM PIPEBOOT INSTALLATION

DWG 1 OF 3

STEP 1
CUT PIPEBOOT OPEN
(HIDDEN LINE REPRESENTS
CUTTING LINE)

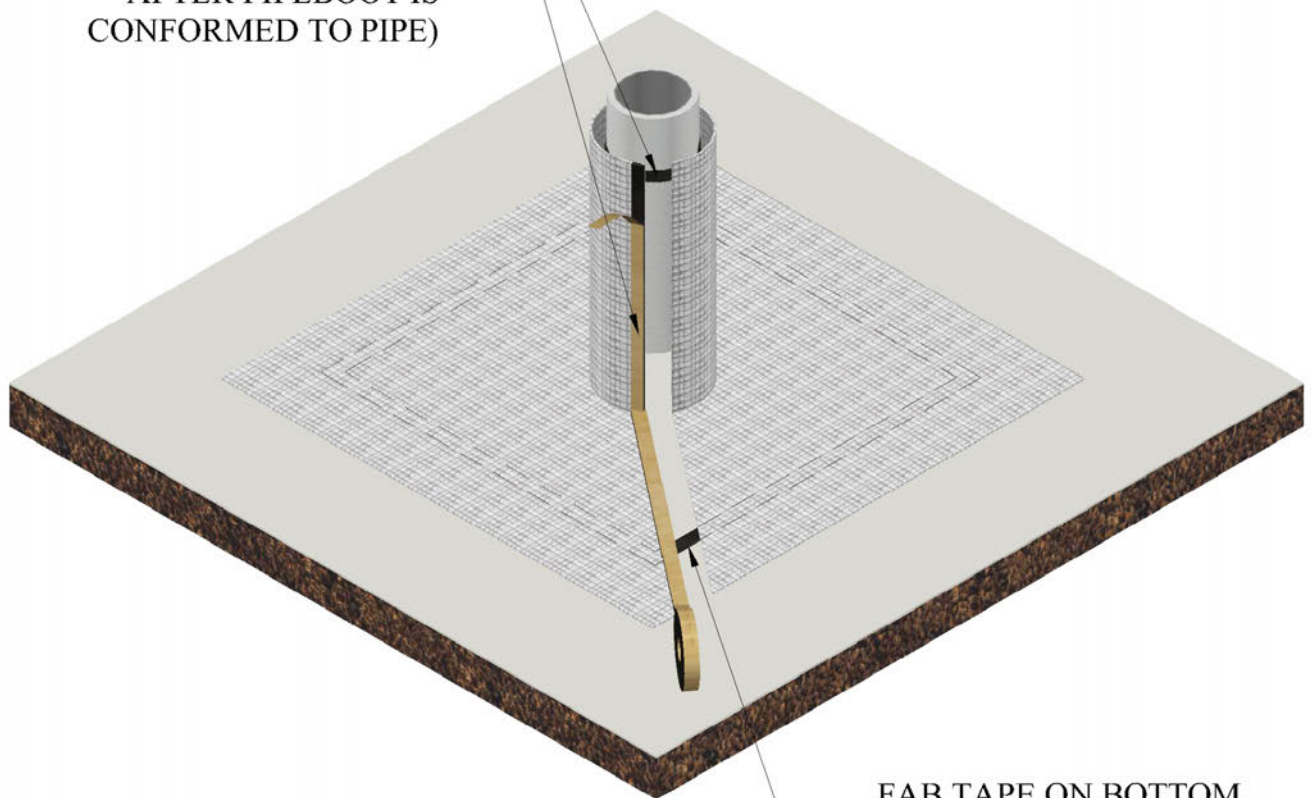


NOTE: This document provides information related to the installation of "pipeboots" and it's components. This document does not attempt to address all aspects of an installation for all application. The information presented is general information in order to familiarize the individual with the overall scope of the project.

CUSTOM PIPEBOOT INSTALLATION

DWG 2 OF 3

STEP 2
APPLY DOUBLE SIDED FAB
TAPE ALONG CUT EDGE
AND AROUND PIPE BELOW
THE TOP EDGE OF PIPEBOOT
(REMOVE RELEASE PAPER
AFTER PIPEBOOT IS
CONFORMED TO PIPE)

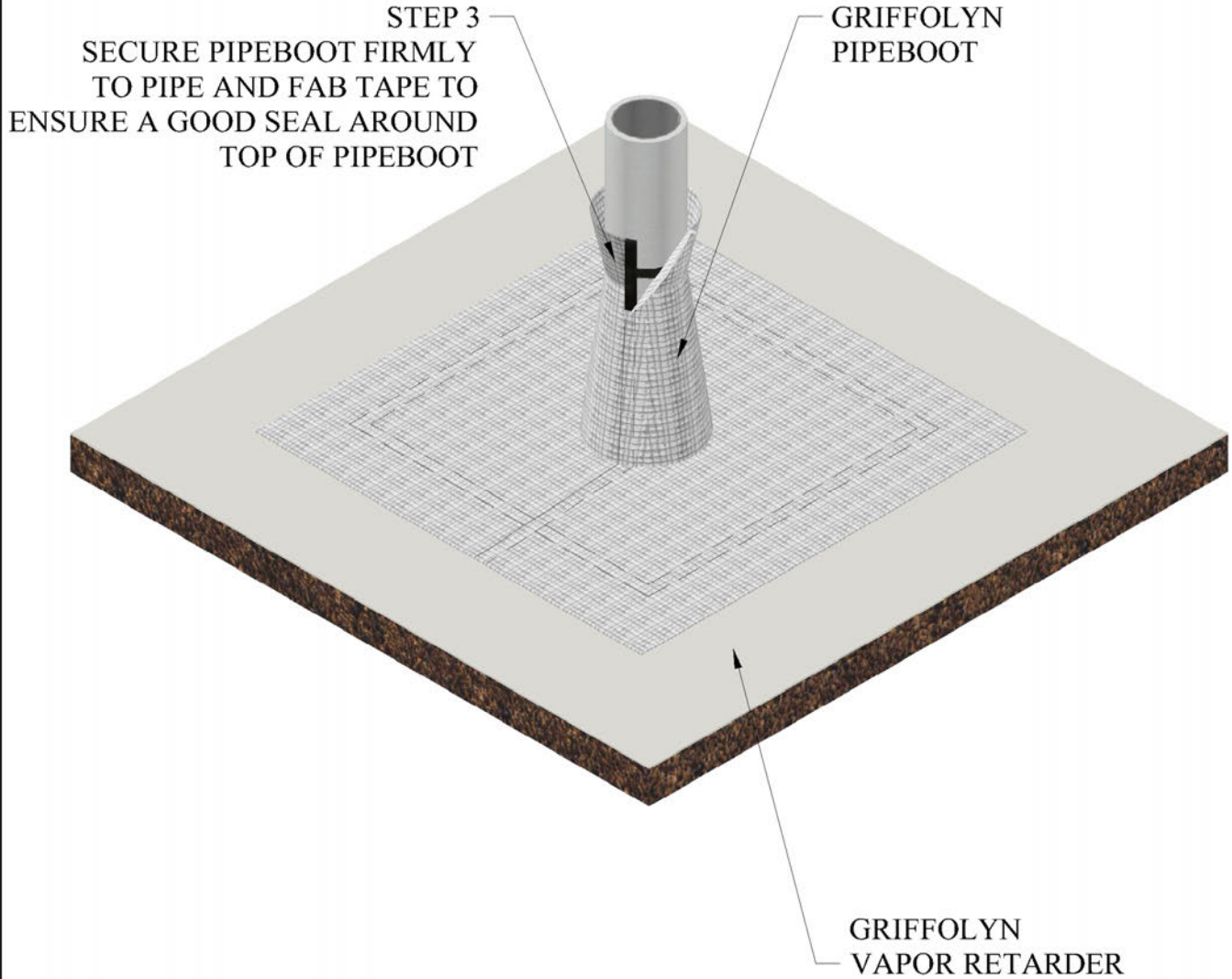


FAB TAPE ON BOTTOM
EDGE BETWEEN VAPOR
RETARDER AND PIPEBOOT
(REMOVE RELEASE PAPER
AFTER PIPEBOOT IS
CONFORMED TO PIPE)

NOTE: This document provides information related to the installation of "pipeboots" and its components. This document does not attempt to address all aspects of an installation for all application. The information presented is general information in order to familiarize the individual with the overall scope of the project.

CUSTOM PIPEBOOT INSTALLATION

DWG 3 OF 3



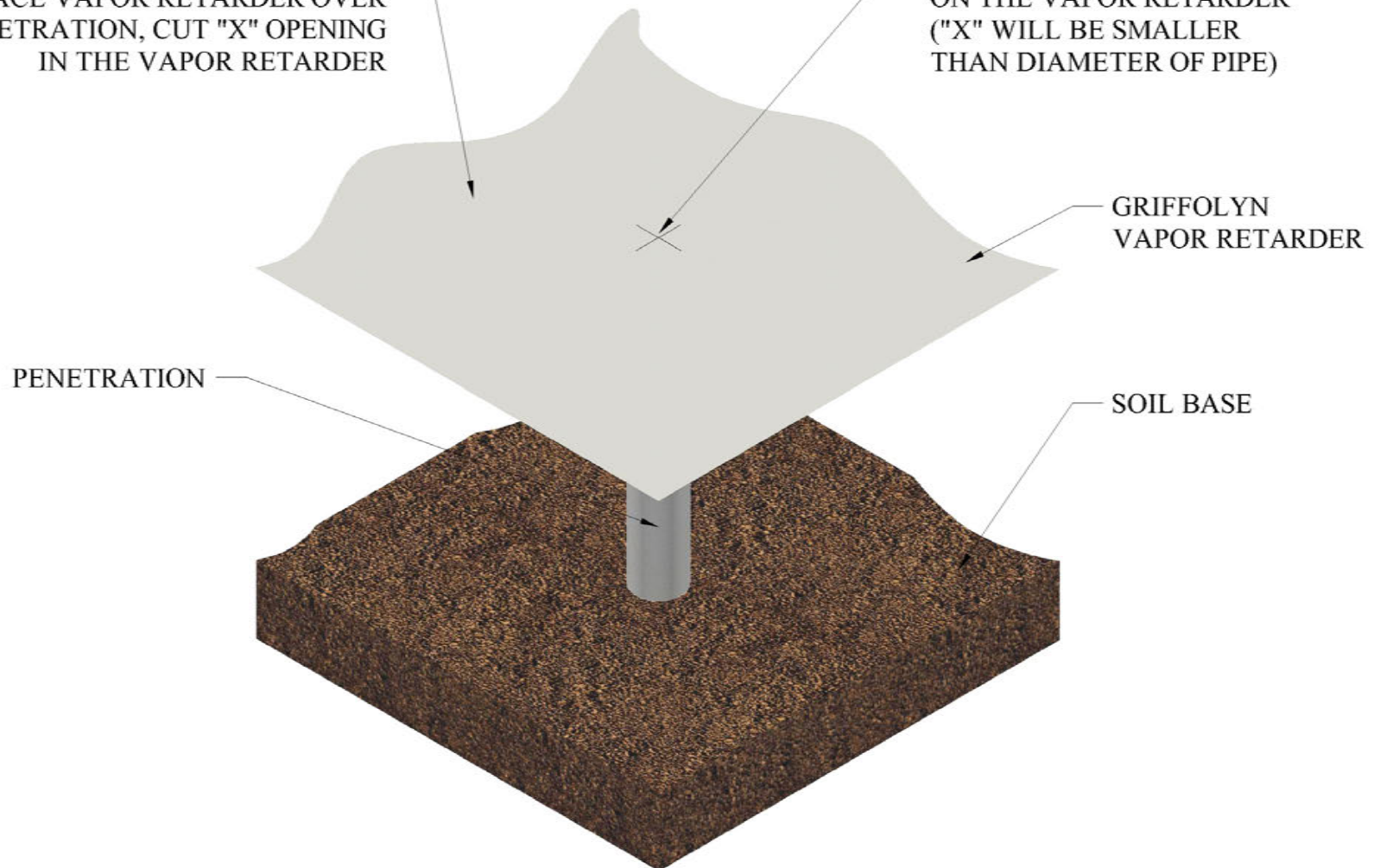
NOTE: This document provides information related to the installation of "pipeboots" and it's components. This document does not attempt to address all aspects of an installation for all application. The information presented is general information in order to familiarize the individual with the overall scope of the project.

STANDARD PIPEBOOT INSTALLATION

DWG 1 OF 4

STEP 1
PLACE VAPOR RETARDER OVER
PENETRATION, CUT "X" OPENING
IN THE VAPOR RETARDER

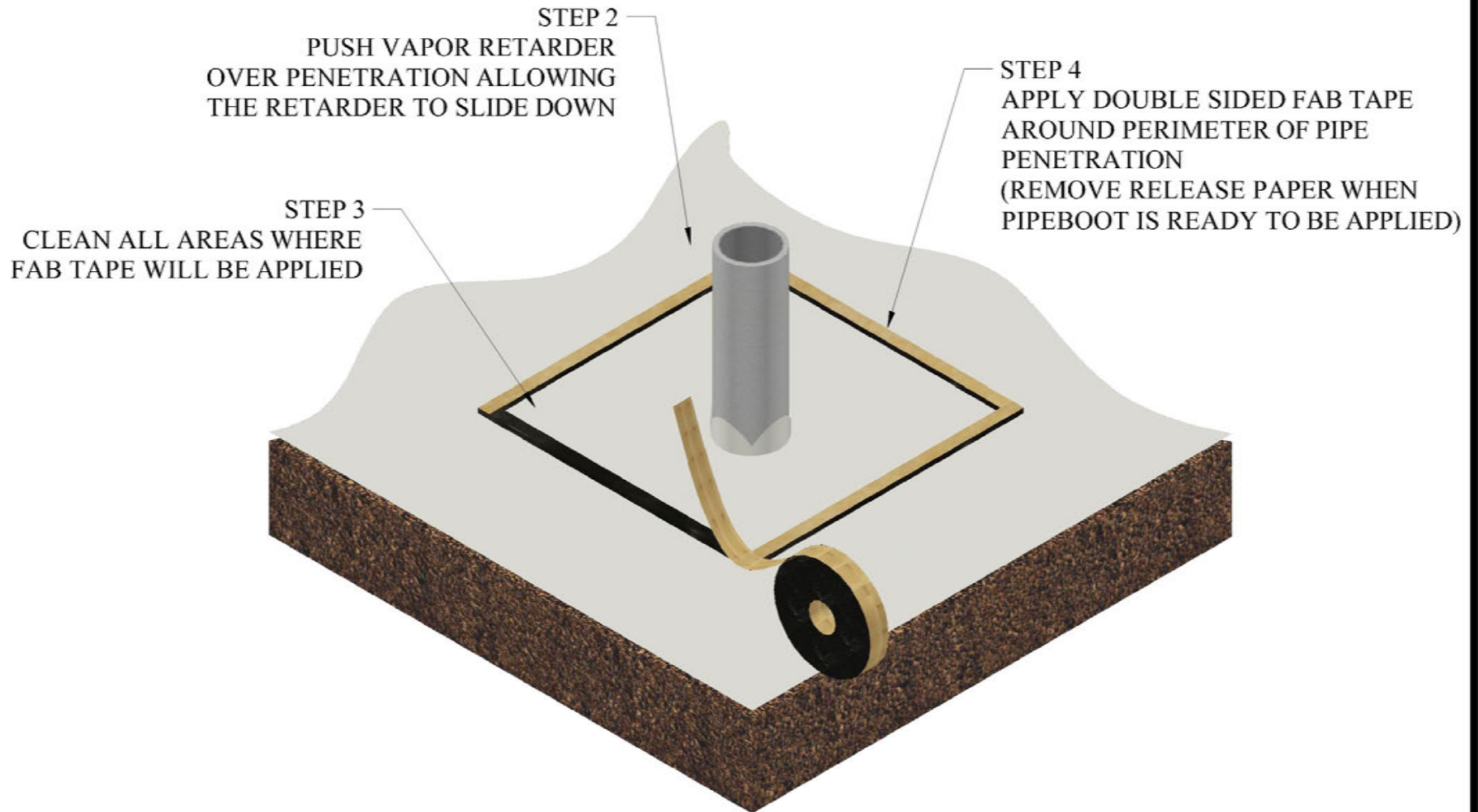
"X" REPRESENTS THE CUT
ON THE VAPOR RETARDER
("X" WILL BE SMALLER
THAN DIAMETER OF PIPE)



NOTE: This document provides information related to the installation of "pipeboots" and its components. This document does not attempt to address all aspects of an installation for all application. The information presented is general information in order to familiarize the individual with the overall scope of the project.

STANDARD PIPEBOOT INSTALLATION

DWG 2 OF 4



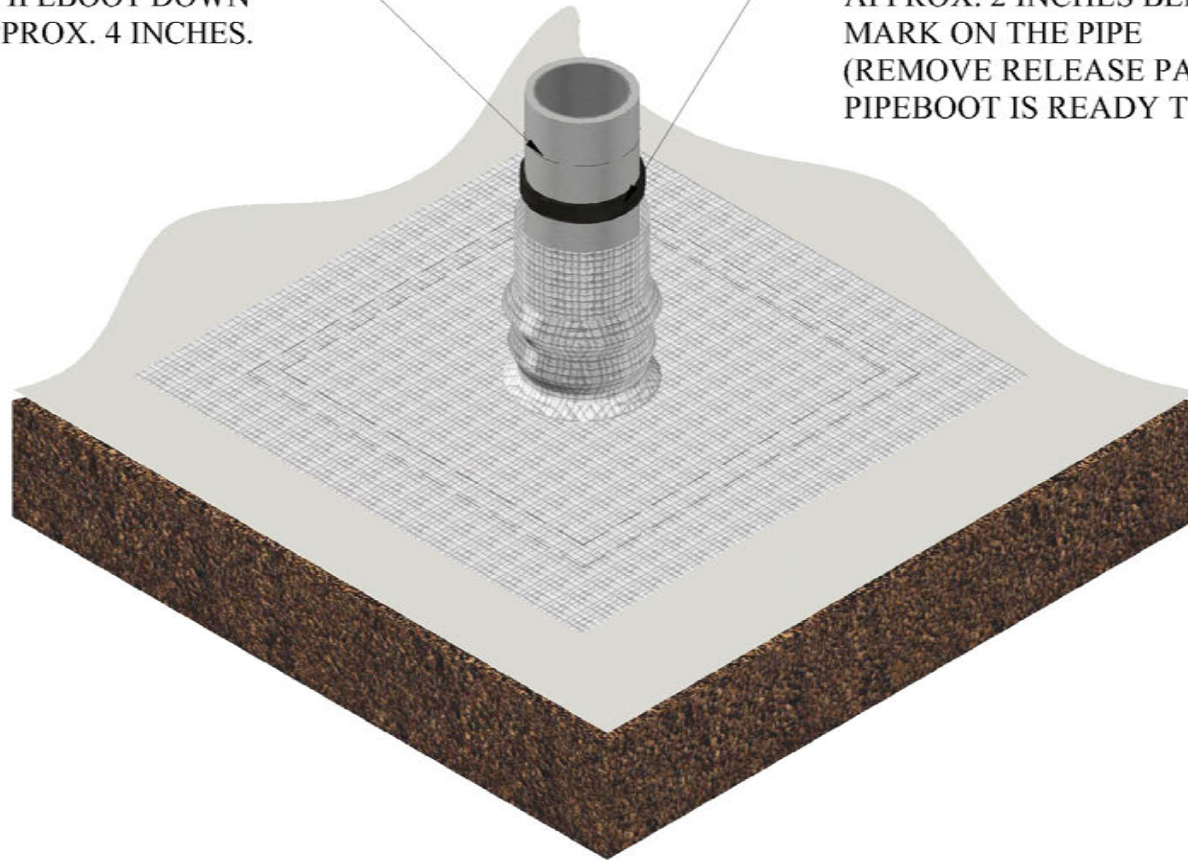
NOTE: This document provides information related to the installation of "pipeboots" and its components. This document does not attempt to address all aspects of an installation for all application. The information presented is general information in order to familiarize the individual with the overall scope of the project.

STANDARD PIPEBOOT INSTALLATION

DWG 3 OF 4

STEP 5
MARK TOP EDGE WHERE PIPEBOOT
ENDS AND SLIDE PIPEBOOT DOWN
APPROX. 4 INCHES.

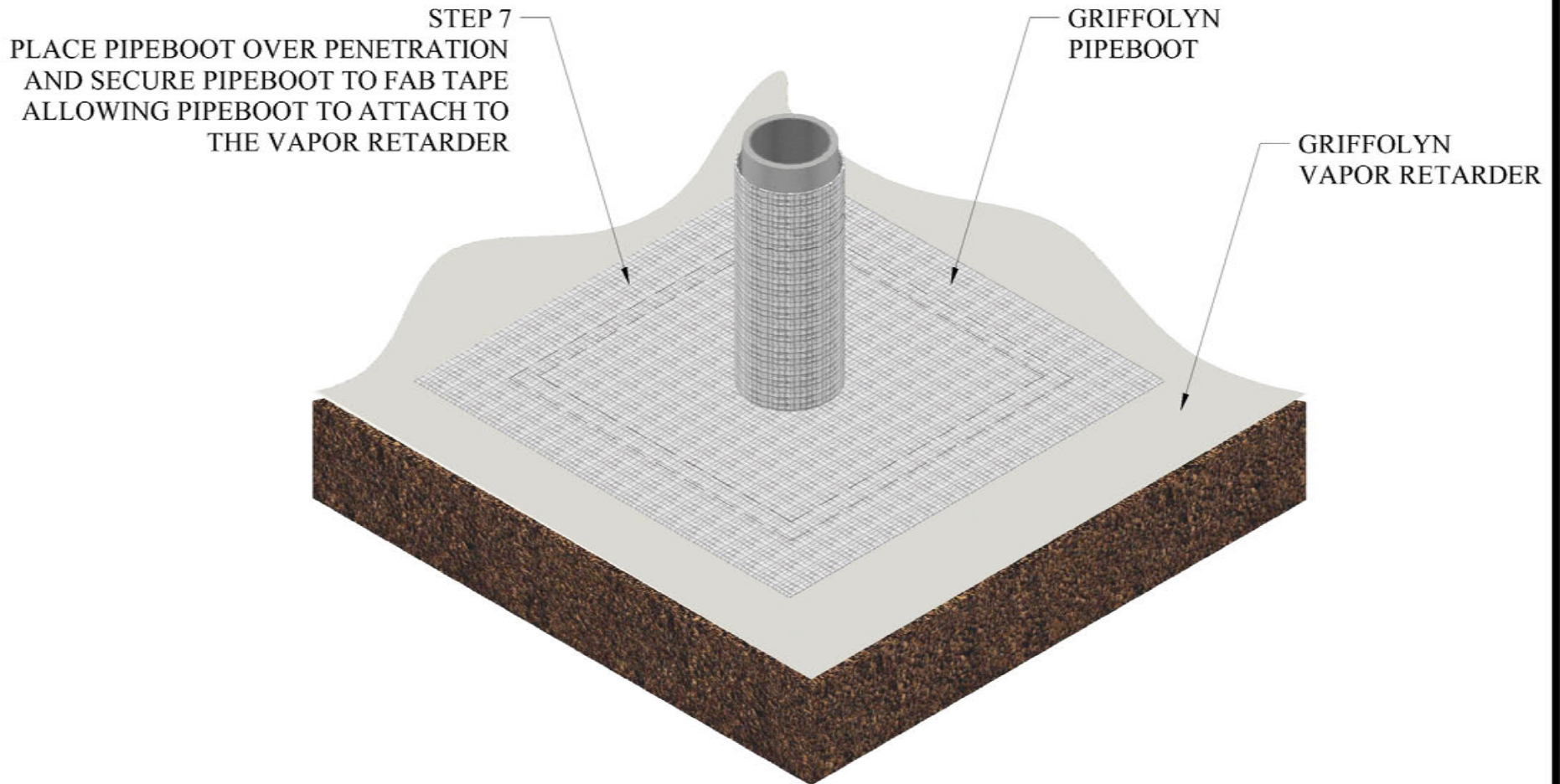
STEP 6
APPLY DOUBLE SIDED FAB TAPE
APPROX. 2 INCHES BELOW THE
MARK ON THE PIPE
(REMOVE RELEASE PAPER WHEN
PIPEBOOT IS READY TO BE ATTACHED)



NOTE: This document provides information related to the installation of "pipeboots" and its components. This document does not attempt to address all aspects of an installation for all application. The information presented is general information in order to familiarize the individual with the overall scope of the project.

STANDARD PIPEBOOT INSTALLATION

DWG 4 OF 4



NOTE: This document provides information related to the installation of "pipeboots" and its components. This document does not attempt to address all aspects of an installation for all application. The information presented is general information in order to familiarize the individual with the overall scope of the project.